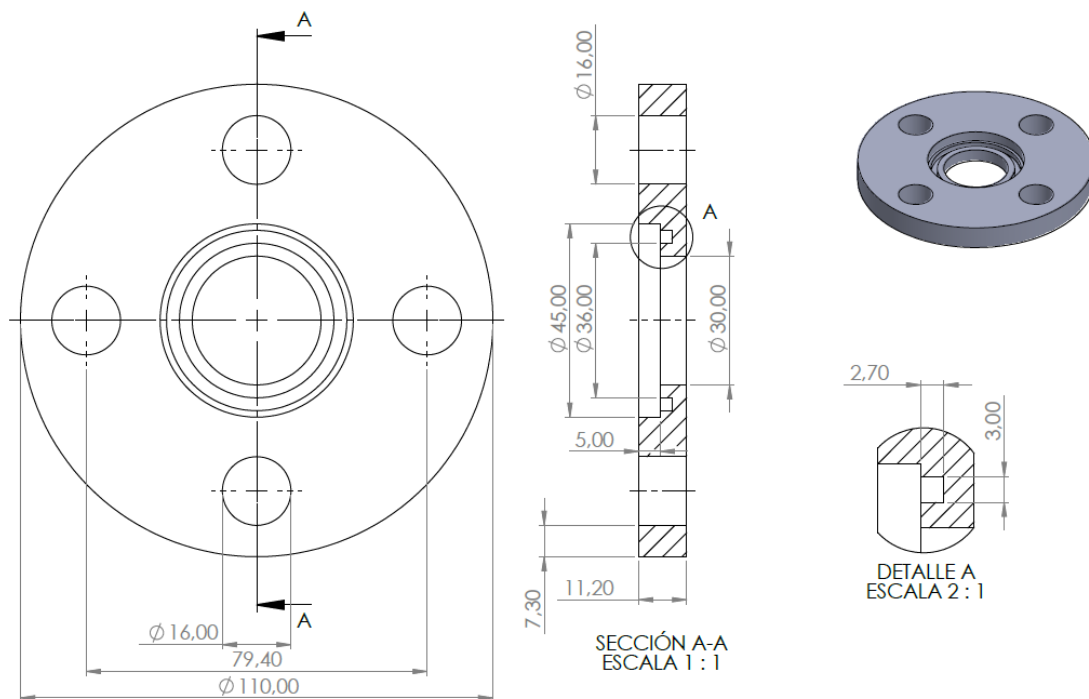


Nombre de la pieza

Brida inferior válvula de 6 pulgadas



OPERACIONES	TIEMPO
Parte 1, Refrentado, perforado y ampliado	5 [min]
Parte 2, Biselado	1 [min]



Descripción



1. Refrentado, perforado y ampliado

1.1 Material: Brida comercial AISI de 1" ciega

1.2 Montaje de pieza en máquina "CNC - 1" o "CNC - 2"

1.3 Herramienta

Nombre de la herramienta	Imagen ilustrativa	Parámetros	Operación
Buril MTJNR		Vc: 120-180 [m/min] Rpm: 1000 Ap: 0,8 [mm] F: 0.25 [mm/rev]	Refrentar y torneear
Broca SP de 30 mm		Vc: 50 [m/min] Rpm: 800 Ap: 0.06 [mm] F: 0, 0.06 [mm/rev]	Perforar

Barra		Vc: 50-80 [m/min] Rpm: 800 Ap: 0,5 [mm] F: 0.2 [mm/rev]	Desbaste interno
Buril de ranurar de tungsteno		Vc: 20-30 [m/min] Rpm: 200 Ap: 0,5 [mm] F: 0.03 [mm/rev]	Ranurar para O-ring

1.4 Código máquina

00001(BRIDA SUPERIOR VAL 4);

G21 G40 G80 G99;

T0101; (BURIL MTJNR)

G56 G96 M03 S250;

G50 S1000;

G0 Z-25;

G0 X112 M08;

G01 X-2 F0.25;

G0 W1;

G0 G28 U0 M09;

G0 G28 W0;

T0303; (BROCA SP)

G56 G97 M03 S800;

G0 Z50;

G0 X-30 M08;

G0 Z-24;

G83 W-14 Q50000 F0.06;

G0 Z50 M09;

G0 G28 U0;

G0 G28 W0;

T0505; (BARRA DE DESBASTE INTERNO)

G56 G96 M03 S250;

G50 S800;

G0 X29;

G0 Z-24;

G71 U1 R0,05;

G71 P1 Q2 U0 W0 F0,25;

N01 G01 X46.5;

G01 W-1;

G01 X45 W-0,8,

G01 W-4.2;

G01 X30;

G01 W-8;

N02 G01 X29;

G0 Z50 M09;

G0 G28 U0;

G0 G28 W0;

T0707; (BURIL DE RANURAR TUNGSTENO)

G56 G96 M04 S100;

G50 S180;

G0 Z50;

G0 X42;

G0 Z-24;

G01 W-3.7 F0.025;

G01 W3.7

G0 Z50;

G0 G28 U0;

G0 G28 W0;


M30;

2. Biselado

2.1 Montaje de pieza en máquina "CNC - 1" o "CNC - 2"

2.2 Herramienta

Nombre de herramienta	Imagen ilustrativa	Parámetros	Operación
-----------------------	--------------------	------------	-----------

Nine9		Vc: 120-180 [m/min] Rpm: 1200 F: 0.1 [mm/rev]	Biselar
-------	---	---	---------

2.3 Código máquina

**00021(BISEL BRIDA SUP VAL
4);**

G21 G40 G80 G99;

T0303; (NINE9)

G56 G97 M04 S1200;

G0 Z50;

G0 X37;

G0 Z-25;

G01 Z-28 F0.1:

G0 Z50;

G0 G28 U0;

G0 G28 W0;

M30;

¡PIEZA TERMINADA!